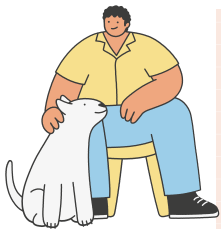




GETTING STARTED WITH PET MINISTRY

Our mission is to foster a loving community that nurtures the bonds between people and their pets, reflecting God's compassion and care. We support and empower faith communities in creating compassionate and caring pet ministries that serve as a bridge between faith and community, demonstrating God's love through the care and inclusion of pets and their people.



BLESSING OF THE ANIMALS

Host an annual or monthly Blessing of the Animals. Share photographs of people with their pets. Pray for those pets who have passed or who are sick. Support a local community pet group with donations.

GRIEF AND LOSS

- Reach out with support and prayers.
- Mail a condolence card to families whose pets have passed.
- Personally drop off a condolence gift of grief resources.
- Start an in-person grief support group.

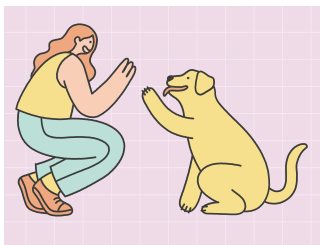




THERAPY DOGS

Have certified therapy dogs visit to offer comfort at events, support groups, classes, senior groups, Vacation Bible School, veterans support, grief support, and recovery.

Start your own therapy dog group with training and certification onsite.



EDUCATIONAL PROGRAMS

Host educational programs on a broad range of spiritual and animal related topics with local and national speakers. In person or on Zoom.



PET MINISTRY



PET FOOD

Hold a donation drive for pet food and supplies for people in need through local food pantries, rescues, and shelters.



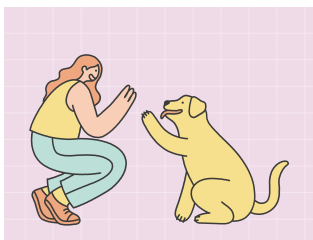
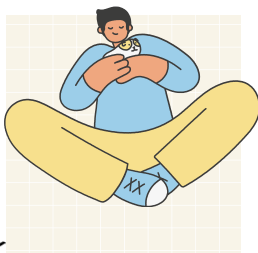
COMMUNICATION

Send a monthly newsletter, create a Facebook or other social media group, post on your church's webpage, enews, bulletin.



VETERINARY FINANCIAL SUPPORT

Offer financial assistance to pay for veterinary services when the pet owner is not able to pay. Provide links to other community financial support groups.



OUTREACH

Form relationships in the pet community with veterinarians, training groups, rescues, shelters, and more. Host serve events. Support Veteran's groups.



Questions? Email us at petministry@cor.org.